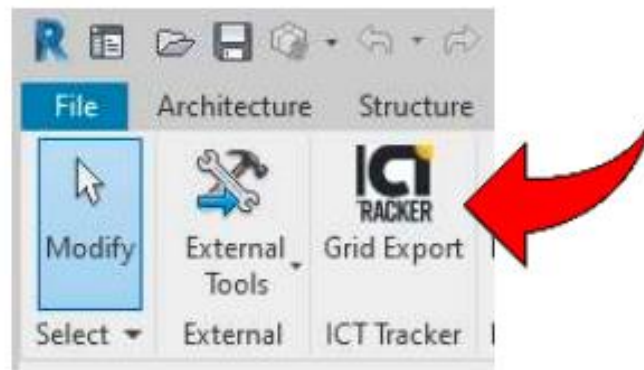


Model Conditioning: Adding Column Grid reference

ICT has developed a plug-in for Revit to extract and generate a 3D Grid NWC file per level that can be added to the model for reference in the app.

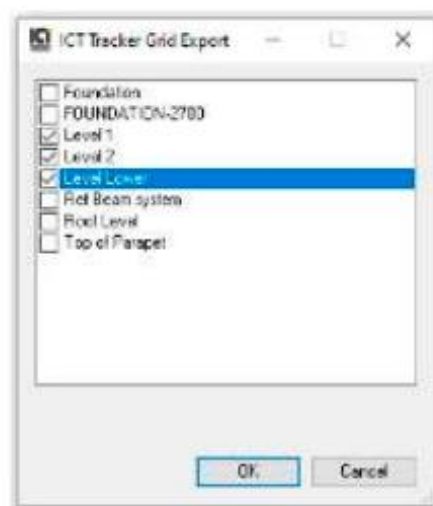
1. Loading the Add-in

- a. ICT will provide the ICT Tracker Grid Export software that will need to be loaded to the user's computer.
- b. The next time the user logs in, the ICT Tracker Grid Export tool will appear on the Add-ins section of the ribbon.

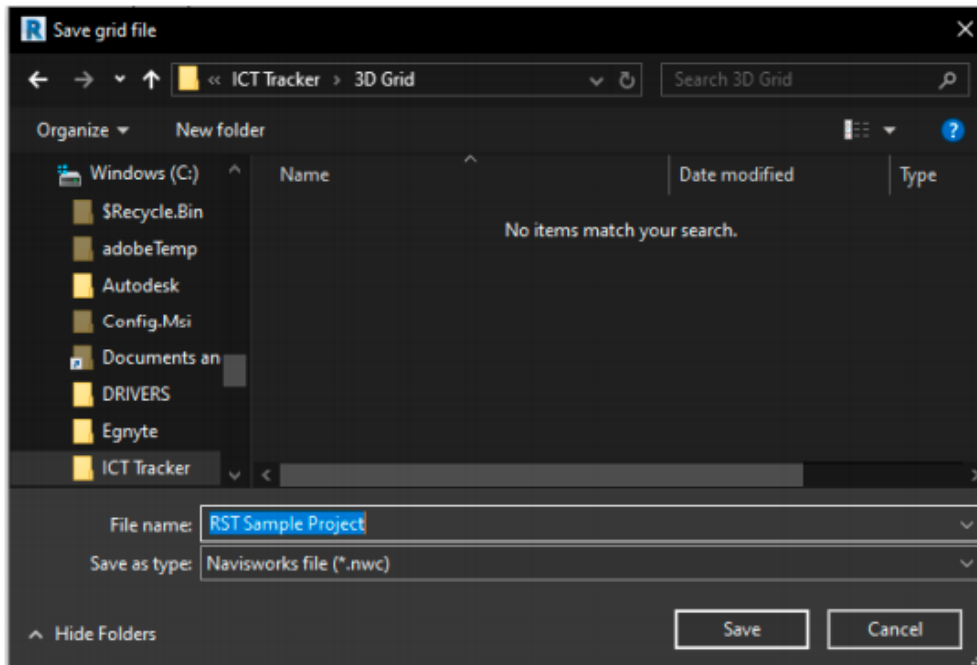


2. Using the ICT Tracker Grid Export Tool

- a. The tool can be used from any view within Revit.
- b. If only grids need to be extracted, then open the Revit file (typically the arch or structural model) and Select the tool button from the ribbon.
- c. When the ICT Tracker Grid Export button is selected, the tool will find all the levels associated with the Revit project file and show them on the ICT Tracker Grid Export dialogue box.
- d. In the dialogue box, pick the checkbox for each level column grid needed to extract

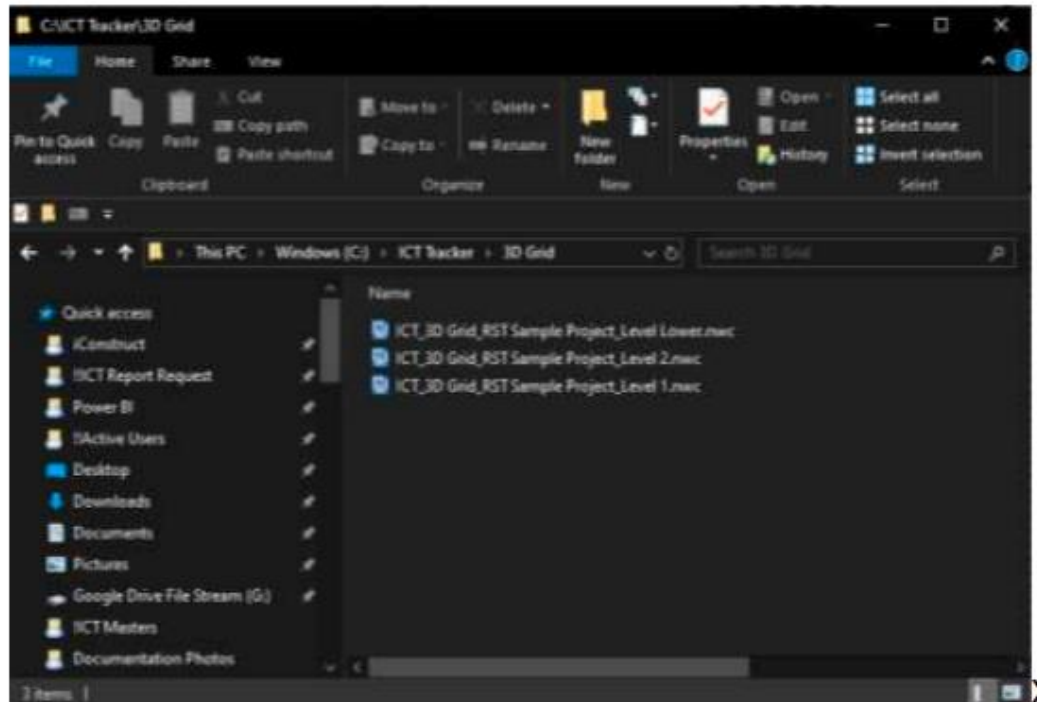


- e. When done selecting the levels checkboxes, select the “OK” button.
- f. The app will open the Save Grid File Dialogue box, where the user can select the location and file name to be used for the NWC file that will be created.
 - i. The default file name typically works unless the user wants a specific naming per company standard as the tool will add a prefix of “ICT_3D Grid_” and a suffix based on the level name as designated in Revit.



- g. Select the “Save” button to start the extraction process

h. The 3D Grid NWC files will be saved in the designated folders with the prefix and suffix added.



i. The files are now ready to be appended by the appropriate level into the project file to be used by the app.

i. Alignment is based on the Revit project base point settings, so alignment might be necessary if the user files utilize a different base point reference