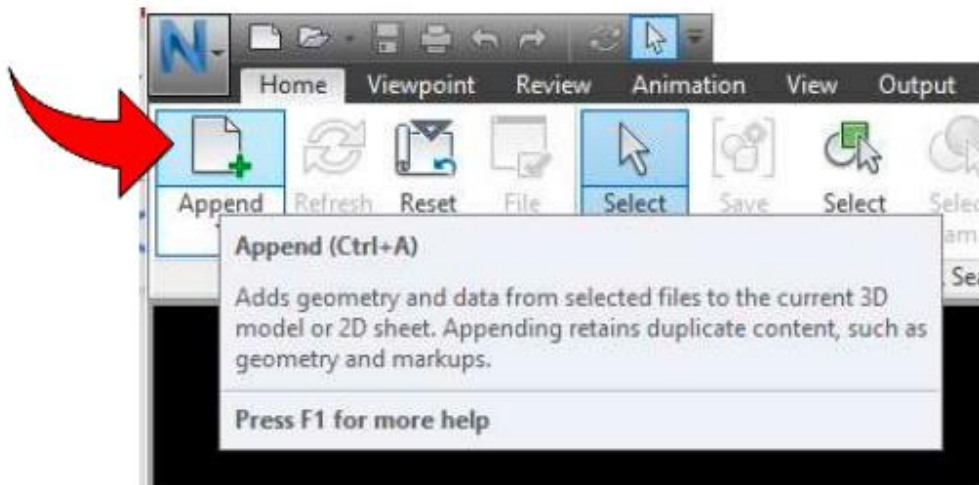
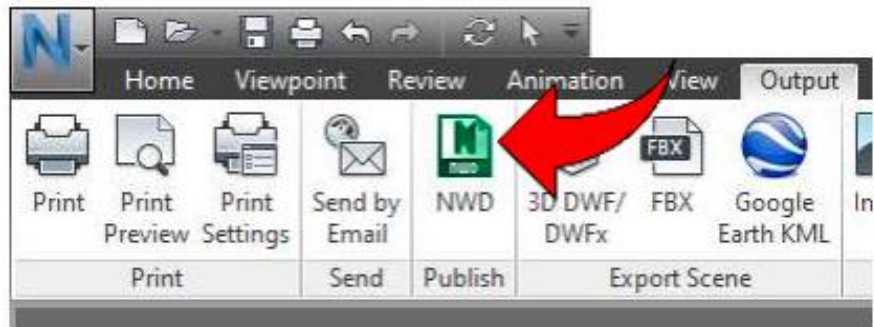


## Model Conditioning: NWD Assembly

1. The conditioned file is now ready to do any of the following.
  - a. Append the AR Markers NWC file
  - b. Append the 3D Grid NWC file.
  - c. Break the model into zone using the iConstruct iView tool.
2. Final NWD File Generation for Augmented Reality use
  - a. Upon completion of the BIM Flow, if using Augmented Reality for tracking, then the user will need to append the Augmented Reality marker NWC file that was created to the BIMflow generated NWD file.
  - b. Open Navisworks and open the BIMflow generated file NWD.
  - c. Select CTRL + A or the “Append” command at the top left of the Home tab.



- i. The “Append” dialogue box will appear.
  - ii. Browse to the folder with the AR Marker NWC file.
  - iii. Select the filename to highlight the file.
  - iv. Select the “Open” button to load the file into the Navisworks file.
1. Upon appending the file, verify the appended file is in the correct location in the model related to the existing model.
    - d. To create the final file for use in the app, select the Output tab and the Publish option on the ribbon.
    - e. The “Publish” dialogue box will open add additional information and options.
    - f. Select the “Ok” button at the bottom to open the “Saveas” dialogue box.
    - g. Navigate to the location for the final ICT NWD files and select “Save” at the bottom of the dialogue box



h. Note: The files posted to BIM 360 DOCS for use with ICT Tracker, need to be in an NWD file and not an NWC or NWF file