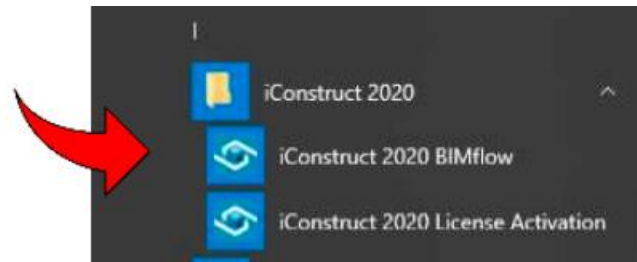
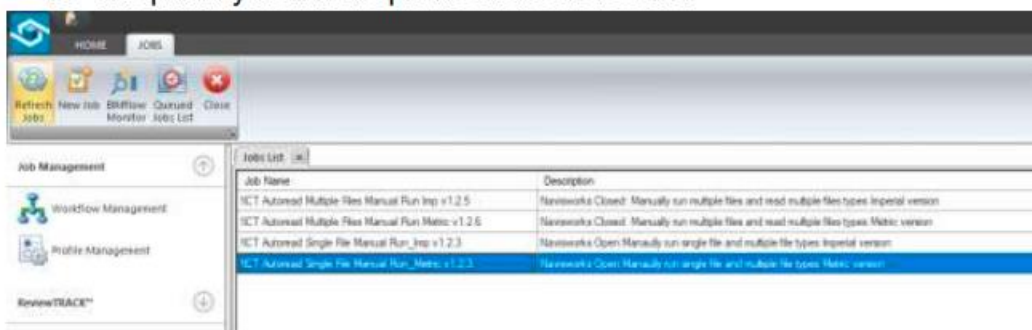


Model Conditioning: Running BIMflow

1. To use BIMflow:
 - a. Start BIMflow.
 - i. We recommend you add it to your taskbar for ease of access



- b. The primary workflows provided are as follows.



- i. !ICT Autoread Multiple Files Manual Run_Imp v1.2.5
 - ii. !ICT Autoread Multiple Files Manual Run_Metric v1.2.6
 - iii. !ICT Autoread Single File Manual Run_Imp v1.2.3
 - iv. !ICT Autoread Single File Manual Run_Metric v1.2.3
- c. All of them will autoread the file to identify the software and trade type.
 - i. The electrical and fire protection conversions require some manual intervention with the use of Excel for data export, auto conversion and import.

2. ICT Autoread Multiple Files Manual workflows

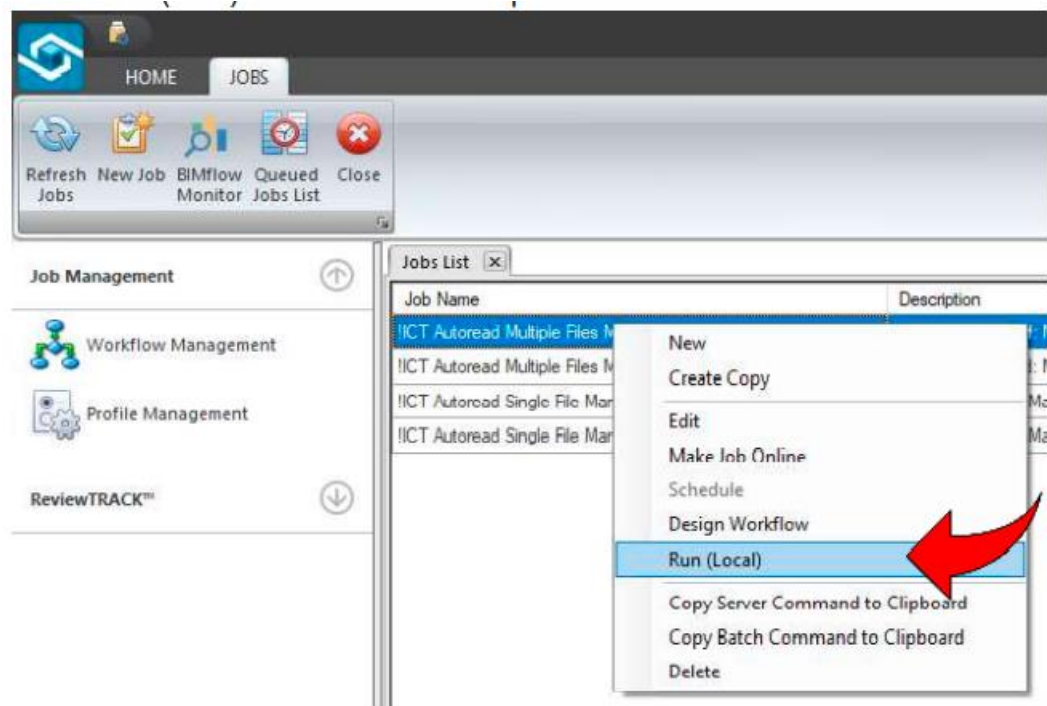
a. The Multiple File workflows

i. Do not require Navisworks to be open.

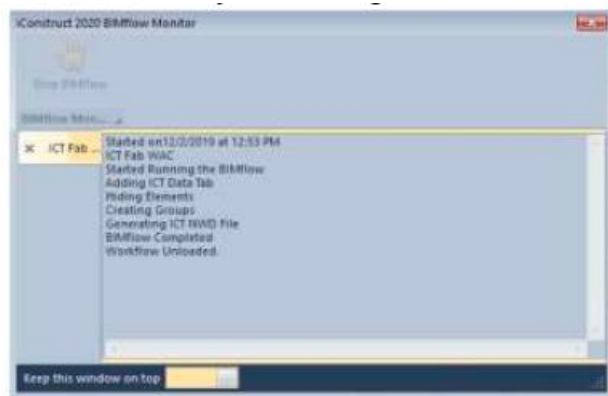
ii. Allows the user to process multiple files at a time and let BIMflow do the conversion in the background.

b. The original NWC or NWD to be converted are loaded in the C:\ICT Tracker\NWx_orig directory.

c. In Bimflow, right click on the multiple file workflow you want to run and select “Run(local)” to start the BIMflow process



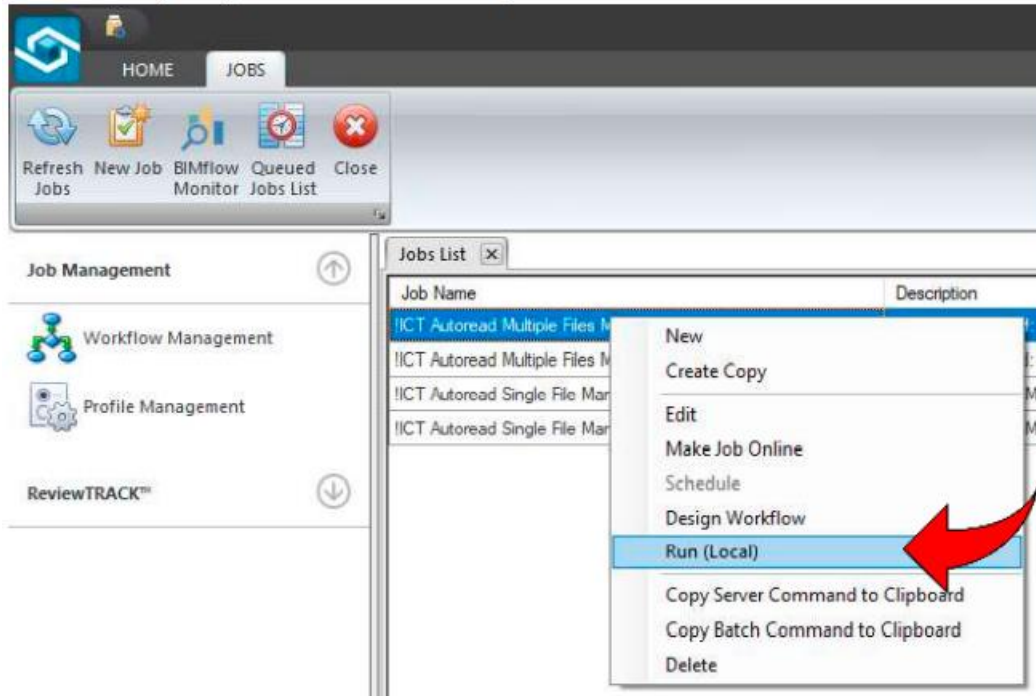
d. The “iConstruct 20XX BIMflow Monitor” dialogue box will appear and list the sequence activities as they are running.



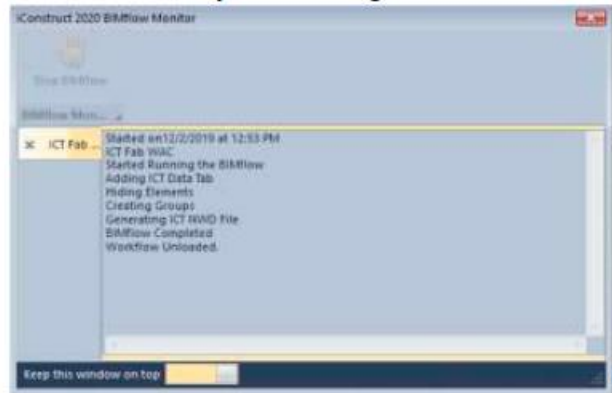
- e. When the files are processed two things will happen
 - i. The original NWC/NWD files will be moved to C:\ICT Tracker\NWx_processed.
 - ii. The new processed NWD file will be written to C:\ICT Tracker\NWD.

3. ICT Autoread Single File Manual Run

- a. The Single File workflows
 - i. Do require Navisworks to be open and the file to be converted loaded.
 - ii. Meant to process one file at a time.
- b. The original NWC or NWD that is loaded will be to be converted
- c. In Bimflow, right click on the single file workflow you want to run and select “Run(local)” to start the BIMflow process.



- d. The “iConstruct 20XX BIMflow Monitor” dialogue box will appear and list the sequence activities as they are running.



- e. When the file is processed it will be written to C:\ICT Tracker\NWD.
4. Depending on the file size and number of elements, the run time can vary.
- BIMflow conditioning tends to run faster on files saved locally vs on remote server or drive.
 - BIMflow works on NWC or NWD files.
 - NWF files cannot be processed.
 - Use the “Stop BIMflow” button on the dialogue box to stop the routine if required. The BIMflow will stop when the current sequence is completed.
 - Upon completion the BIMflow dialogue box will display “Workflow Unloaded”
5. Processed files need to be reviewed in Navisworks to make sure the grouping is as expected in the Selection Tree.
- If there is a “No Group” grouping, then there is an issue with a model element group definition and needs to be reviewed to verify why they were not grouped and then reprocessed to resolve the issue.
 - Possible reason for No Grouping
 - The Category or Service type or etc. was not defined in the grouping CSV files.
 - If all the items go into a “No Group” grouping, it is probably an AutoCAD Fabrication files that does not have a “Service Type” defined as the file was processed with 2018 or older Navisworks.
 - If elements in the model are unintelligent 3D blocks or solids that have no data to configure, they cannot be grouped.
 - If Items in the “No Group” grouping can be hidden and will not show up in BIM 360 DOCs or ICT Tracker